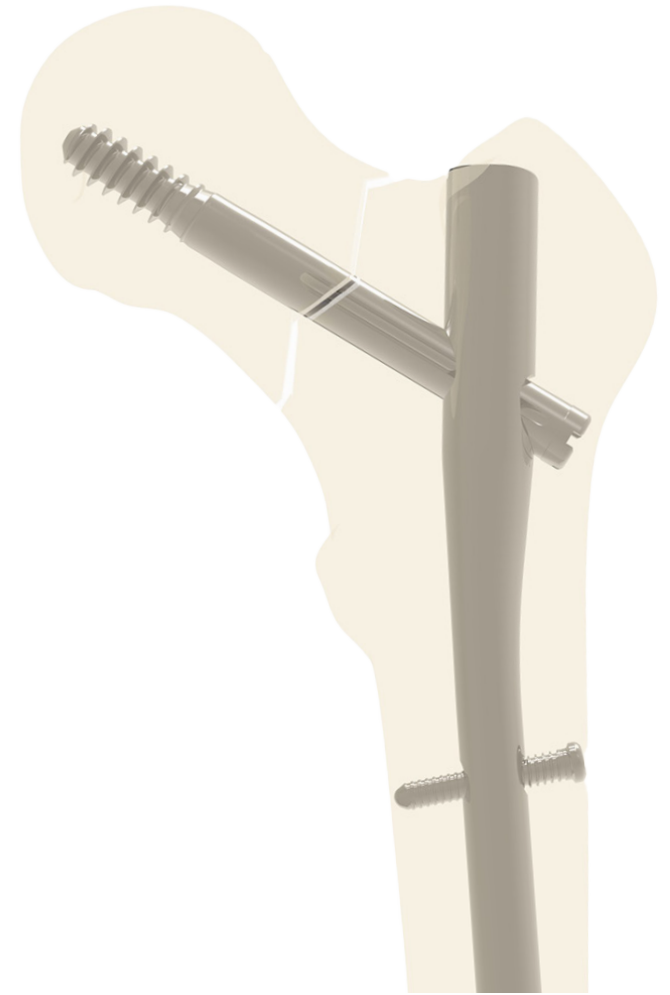
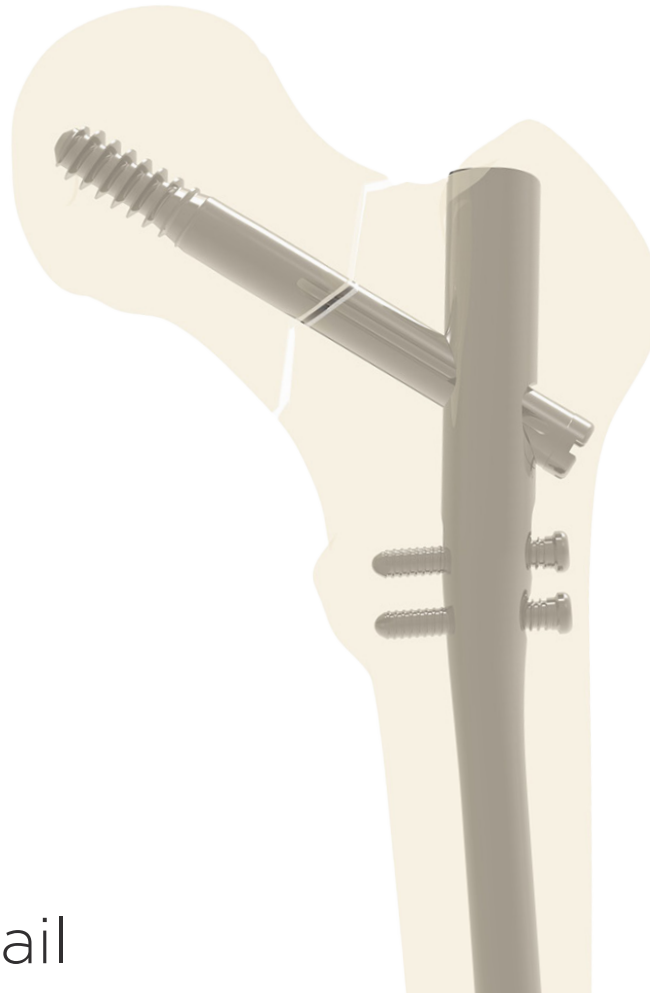


# F1+

Proximal Femoral Nail



**QUICK STEP GUIDE**

# CONSUMABLES

**REF 533235**  
**F1 Guidewire (2pk)**  
**3.2 x 400mm** For use with Austofix Intramedullary Nailing System ONLY  
 316LVM Stainless Steel

Austofix  
 Australian Orthopaedic Fixations  
 Pty Ltd, 18 Kinross Avenue, North  
 Plympton, SA, 5037, Australia  
 Tel: +61 8 83510644  
 Fax: +61 8 83510855  
 www.austofix.com.au

Advena Ltd  
 Tower Business Centre,  
 2nd Flr, Tower Street,  
 Swatar, BKR 4013 Malta

UDI (01) 0 9339430 05298 5 (17) 300101 (10) L349 (21) 0001

2030-01 QTY:2

STERILE R MD CE 2797

REF 533235  
**F1 Guidewire (2pk)**  
**3.2 x 400mm**

LOT L349  
 2030-01  
 2025-01



**REF 514534**  
**Drill**  
**4.5 x 340mm** For use with Austofix Intramedullary Nailing System ONLY  
 Stainless Steel - AO Fitting

Austofix  
 Australian Orthopaedic Fixations  
 Pty Ltd, 18 Kinross Avenue, North  
 Plympton, SA, 5037, Australia  
 Tel: +61 8 83510644  
 Fax: +61 8 83510855  
 www.austofix.com.au

Advena Ltd  
 Tower Business Centre,  
 2nd Flr, Tower Street,  
 Swatar, BKR 4013 Malta

UDI (01) 0 9339430 00278 2 (17) 300801 (10) M 041 (21) 0001

2030-08 QTY:1

STERILE R MD CE 2797

REF 514534  
**Drill**  
**4.5 x 340mm**

LOT M041  
 2030-08  
 2025-08



**REF 533900**  
**Guidewire**  
**3.0 x 900mm** For use with Austofix Intramedullary Nailing System ONLY  
 316L Stainless Steel

Austofix  
 Australian Orthopaedic Fixations  
 Pty Ltd, 18 Kinross Avenue, North  
 Plympton, SA, 5037, Australia  
 Tel: +61 8 83510644  
 Fax: +61 8 83510855  
 www.austofix.com.au

Advena Ltd  
 Tower Business Centre,  
 2nd Flr, Tower Street,  
 Swatar, BKR 4013 Malta

UDI (01) 0 9339430 06834 4 (17) 300501 (10) M093 (21) 0001

2030-05 QTY:1

STERILE R MD CE 2797

REF 533900  
**Guidewire**  
**3.0 x 900mm**

LOT M093  
 2030-05  
 2025-05



**REF 514514**  
**Drill**  
**4.5 x 155mm** For use with Austofix Intramedullary Nailing System ONLY  
 Stainless Steel - AO Fitting

Austofix  
 Australian Orthopaedic Fixations  
 Pty Ltd, 18 Kinross Avenue, North  
 Plympton, SA, 5037, Australia  
 Tel: +61 8 83510644  
 Fax: +61 8 83510855  
 www.austofix.com.au

Advena Ltd  
 Tower Business Centre,  
 2nd Flr, Tower Street,  
 Swatar, BKR 4013 Malta

UDI (01) 0 9339430 06833 7 (17) 300801 (10) M040 (21) 0001

2030-08 QTY:1

STERILE R MD CE 2797

REF 514514  
**Drill**  
**4.5 x 155mm**

LOT M040  
 2030-08  
 2025-08



**REF 543047**  
**Flexible Reamer Shaft**  
**470mm** For use with Austofix Flexible Reamer Set  
 Stainless Steel - ZH Fitting

Austofix  
 Australian Orthopaedic Fixations  
 Pty Ltd, 18 Kinross Avenue, North  
 Plympton, SA, 5037, Australia  
 Tel: +61 8 83510644  
 Fax: +61 8 83510855  
 www.austofix.com.au

Advena Ltd  
 Tower Business Centre,  
 2nd Flr, Tower Street,  
 Swatar, BKR 4013 Malta

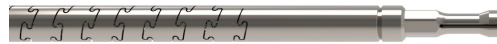
UDI (01) 0 9339430 07323 2 (17) 300601 (10) L520 (21) 0001

2030-06 QTY:1

STERILE R MD CE 2797

REF 543047  
**Flexible Reamer Shaft**  
**470mm**

LOT L520  
 2030-06  
 2025-06



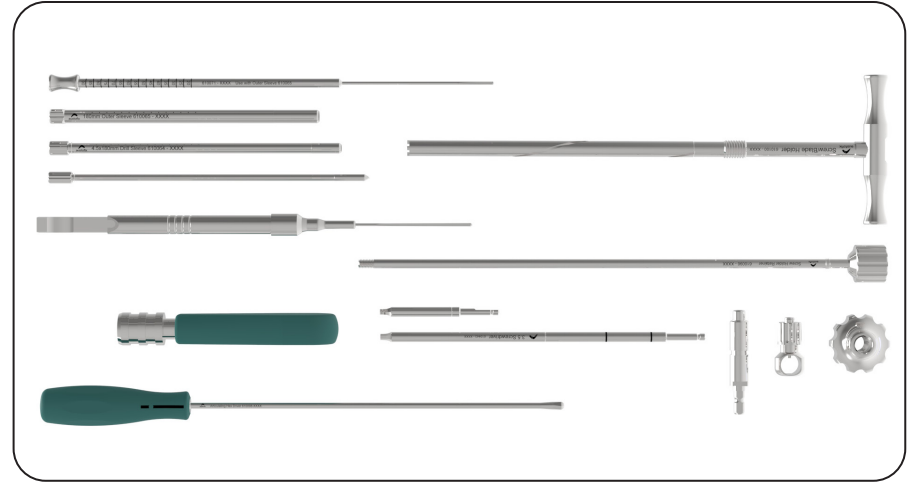
Short  
 170 & 190mm

Long  
 340-460mm

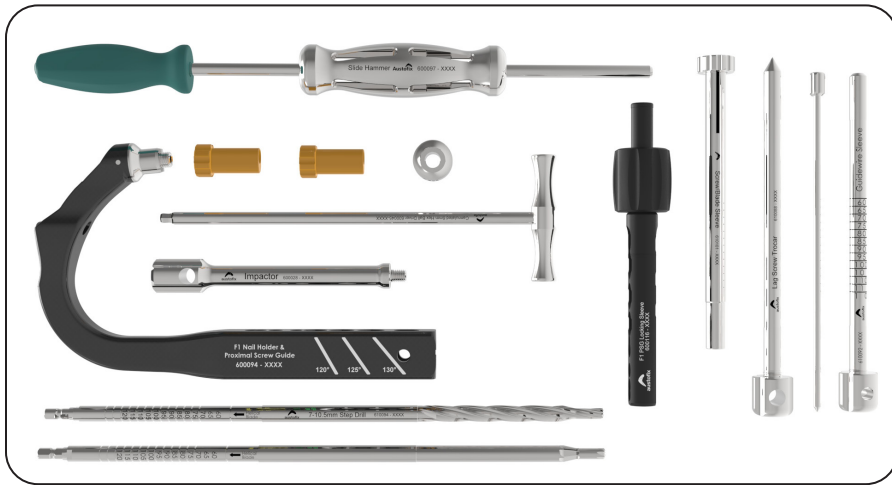
# INSTRUMENT TRAYS



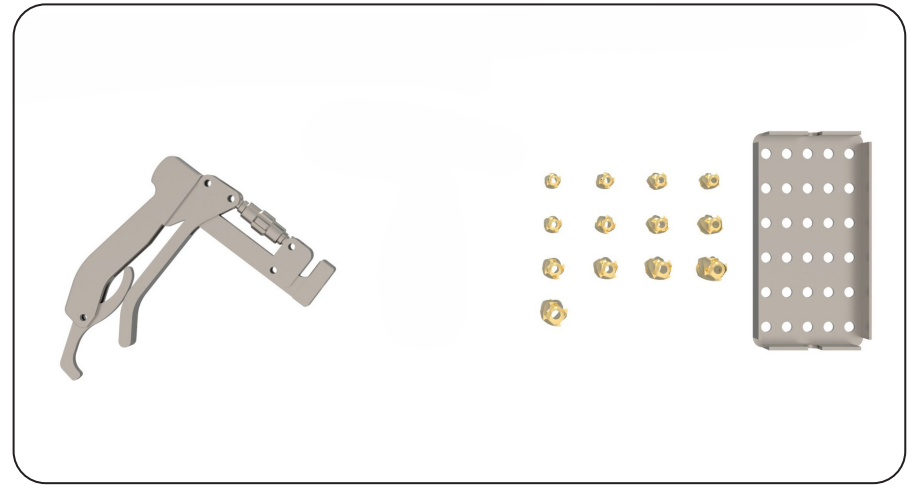
F1+ Tray 1



F1+ Tray 2



F1+ Tray 3



Flexible Reamer Tray

Short  
190mm

Long  
340-460mm

# Initial Entry & Reaming



Entry Point  
(optional)



Tissue  
Guard

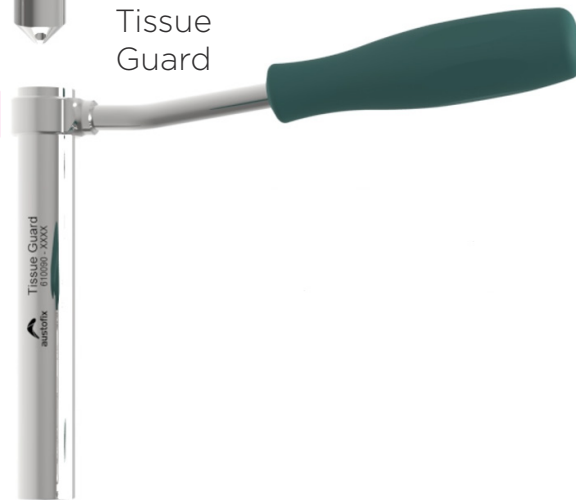


3.2x400mm GW  
(sterile)

Hand Reaming  
(optional)



Guidewire Handle  
(optional)



Cannulated  
Reamer



3.0x900mm GW  
(sterile)

Guidewire  
Director



Depth Gauge



Flexible  
Reamer  
(sterile)



Long Only Assemble Sterile

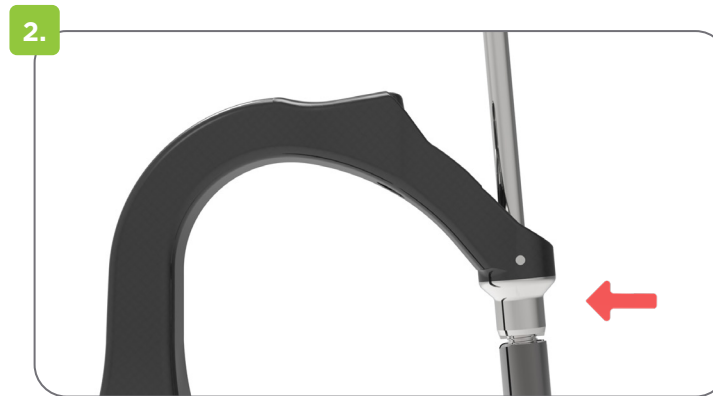
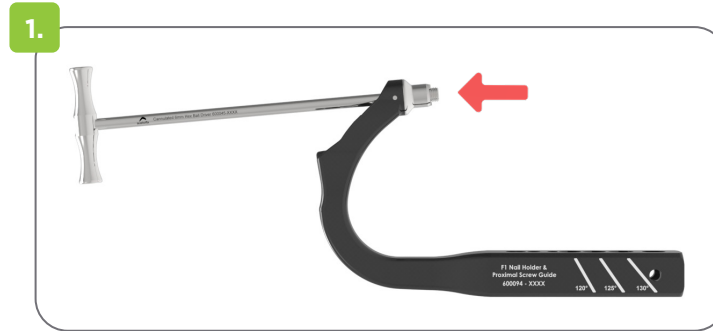
# Nail Holder Assembly



Nail Holder



Locking Sleeve



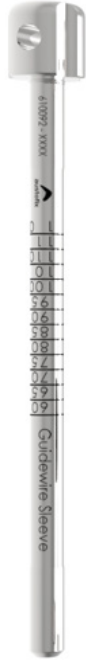
1. Insert the 6 mm Hex Ball Driver (600045) into the In-Built Nail Holding Screw and secure it. Confirm that the screw threads extend beyond the F1 Nail Holder.
2. While holding the Screw steady with the Hex Ball Driver, partially thread the F1 Nail onto the Screw.
3. Once engaged, rotate the Nail and align the tabs with the Nail Holder. When the tabs are aligned, tighten the In-Built Nail Holding Screw with the Hex Ball Driver to secure the Nail in place.



# Hip Screw Reaming



Lag Screw Trocar



Guidewire Sleeve



3.2x400mm GW  
(sterile)



Step Drill  
Stop



Screw/Blade Sleeve



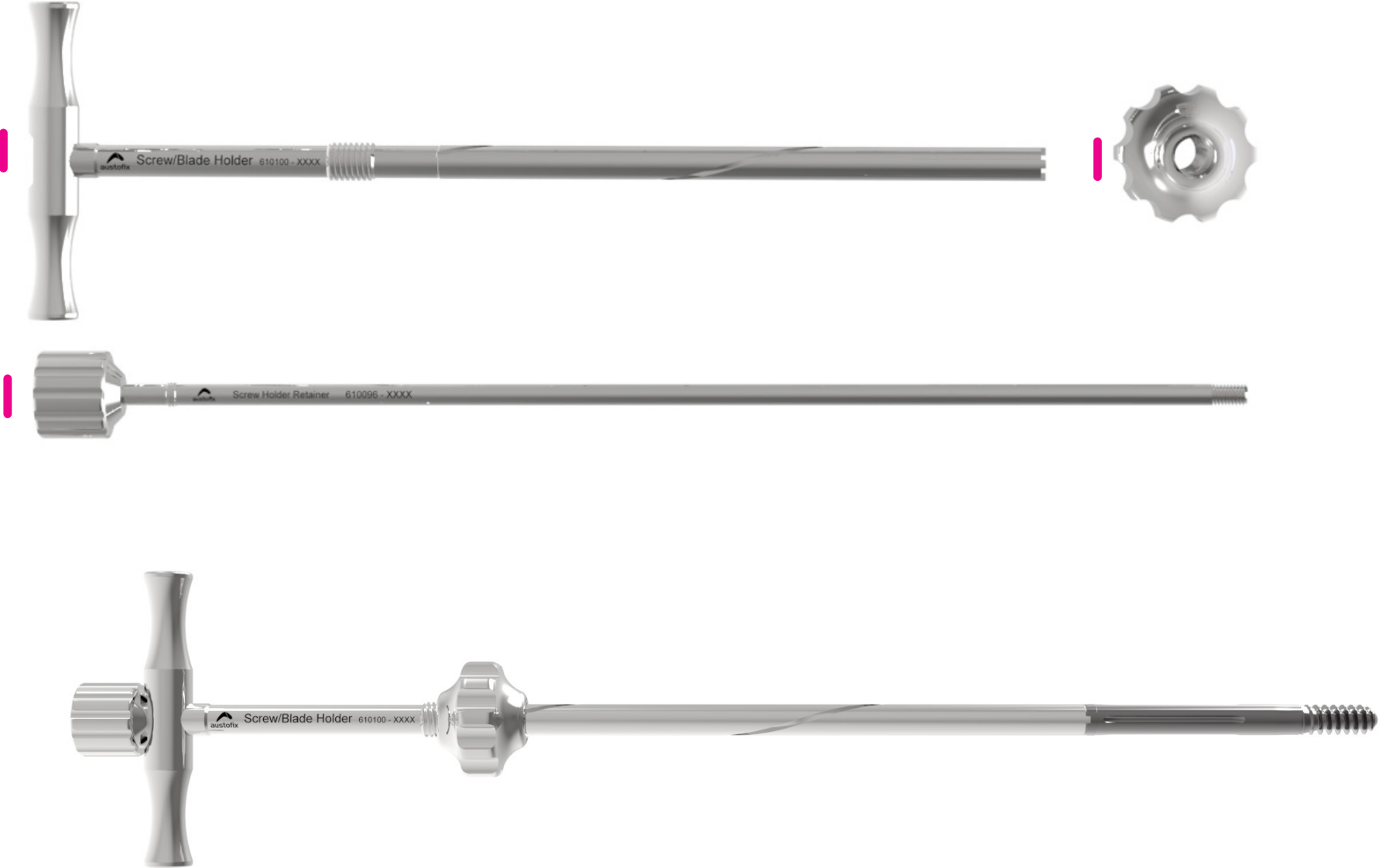
Step Drill



Bone Conserving Reamer  
(optional)

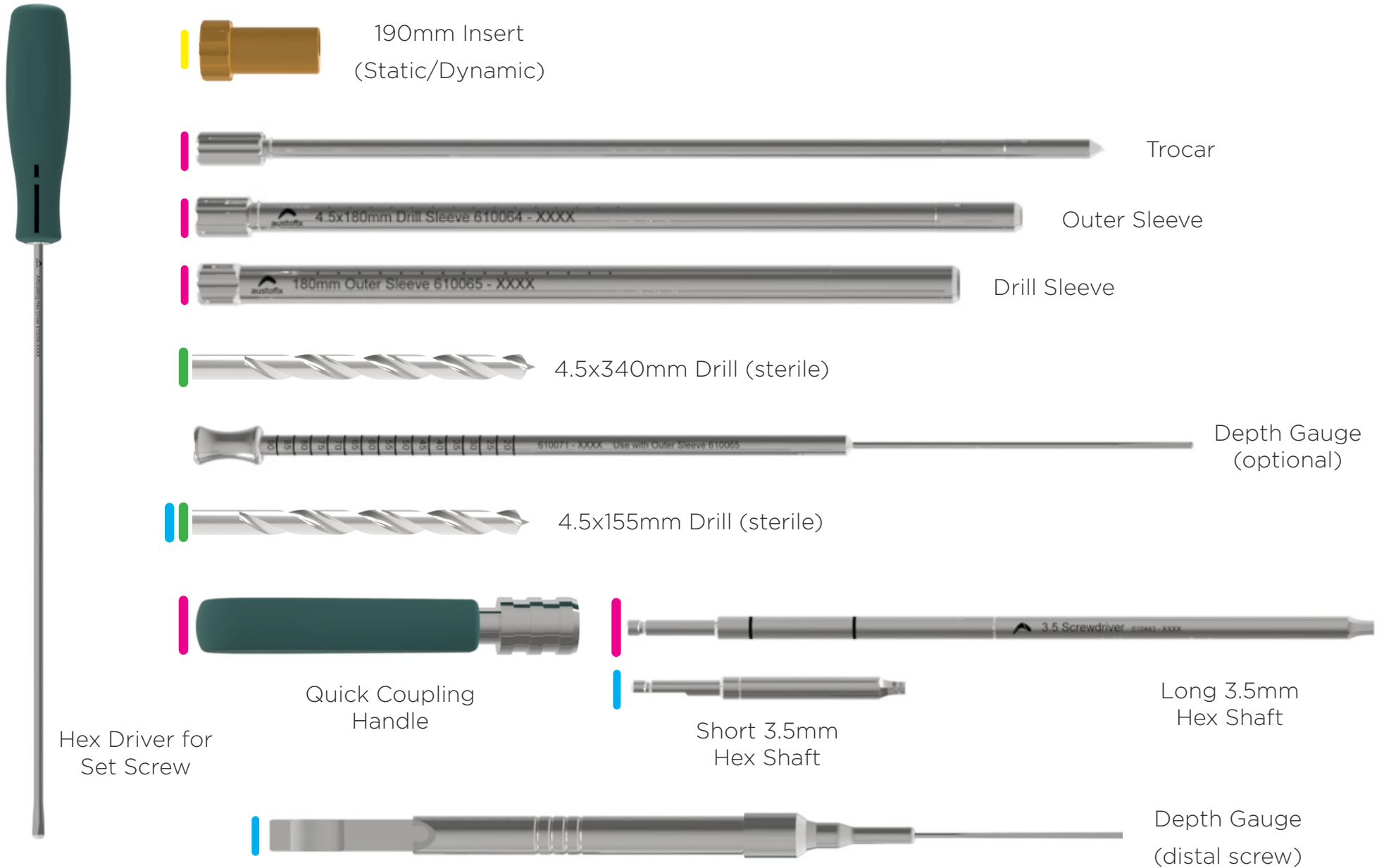
Assemble Sterile

# Hip Screw Assembly



| Assemble

# Screw Insertion



Short (190mm) Only   Long Only   Assemble   Sterile

# Lag Screw Measurement

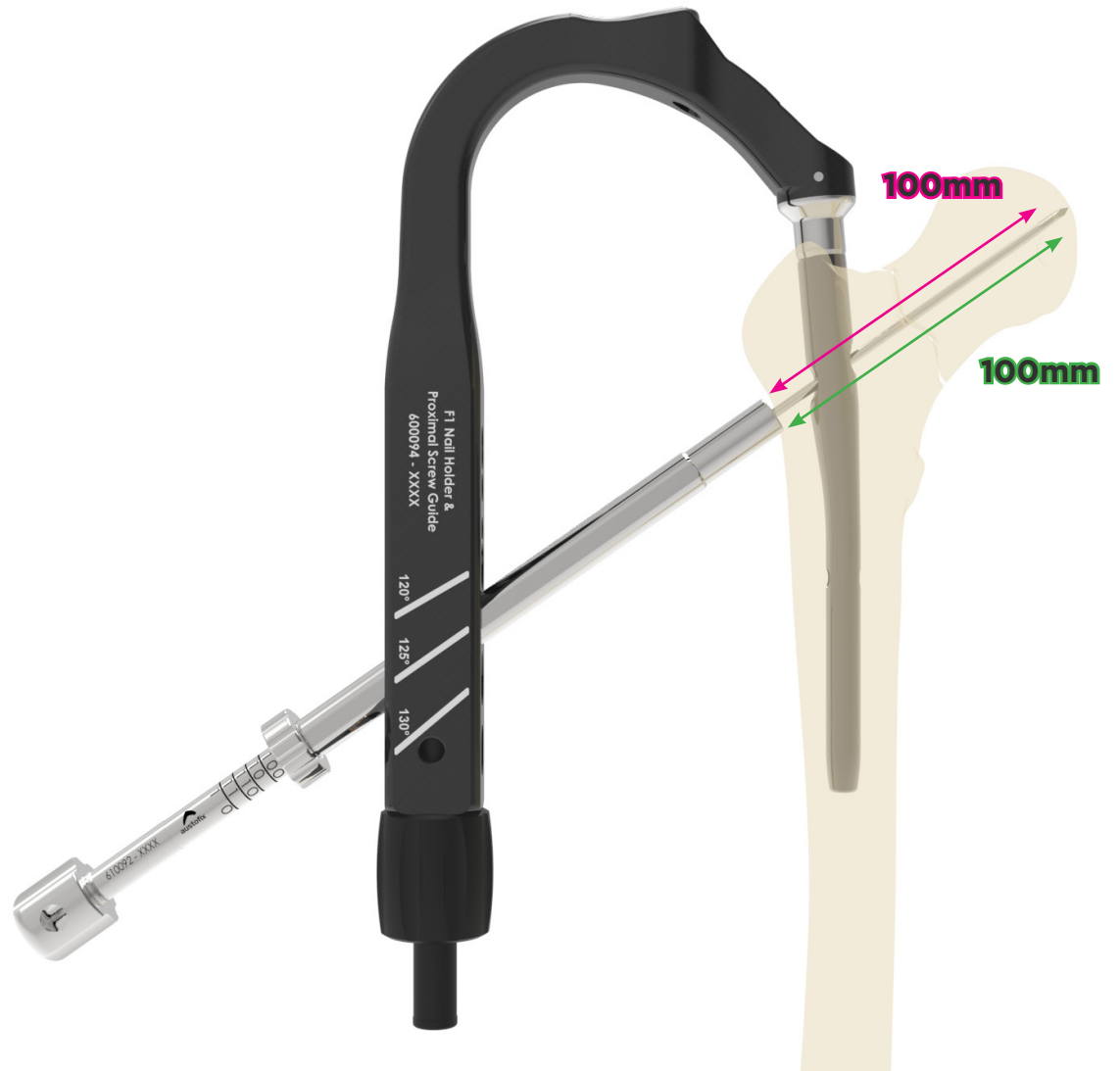
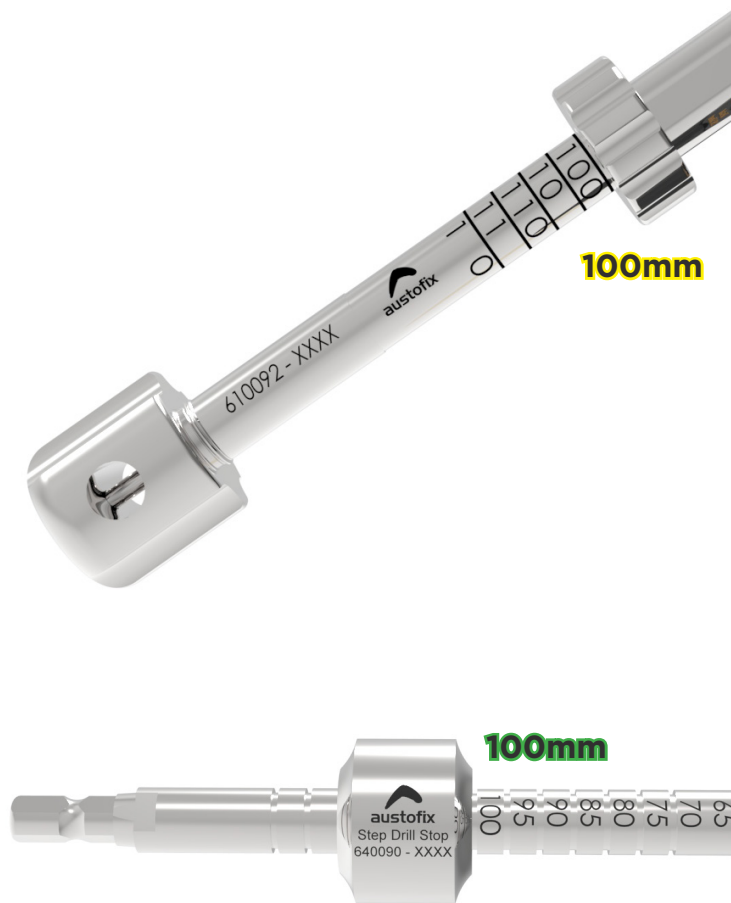
Pull the Guidewire Sleeve back to the end of the Guidewire and take the measurement.

**Note:** Markings will automatically calculate 10mm tolerance between the Hip Screw and medial tip of the femoral head.

Reading: **100mm**

Reaming Depth: **100mm**

Hip Screw Length: **100mm**



# Lag Screw Measurement - Sleeve off Bone

Pull the Guidewire Sleeve back to the end of the Guidewire and take the measurement.

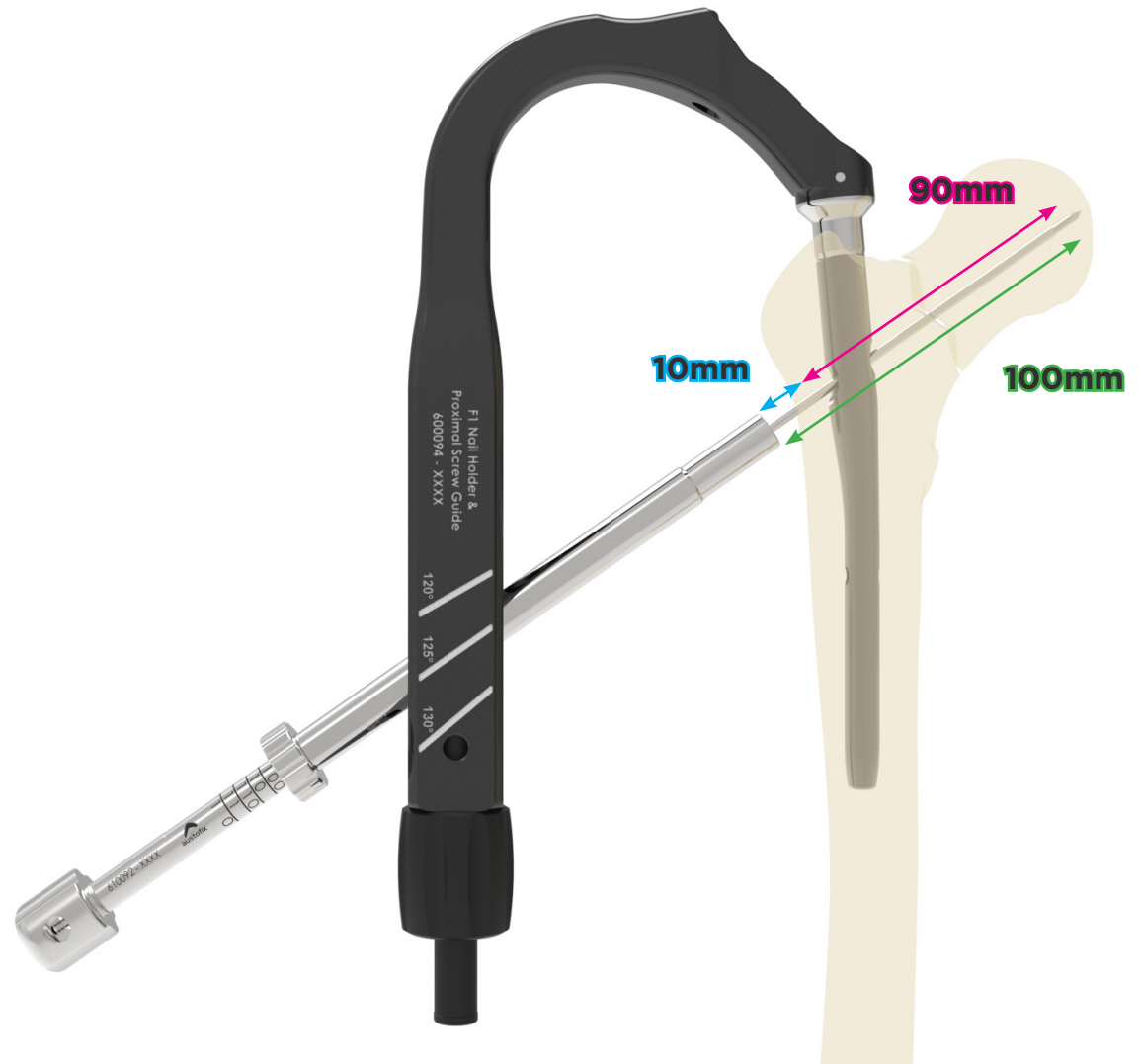
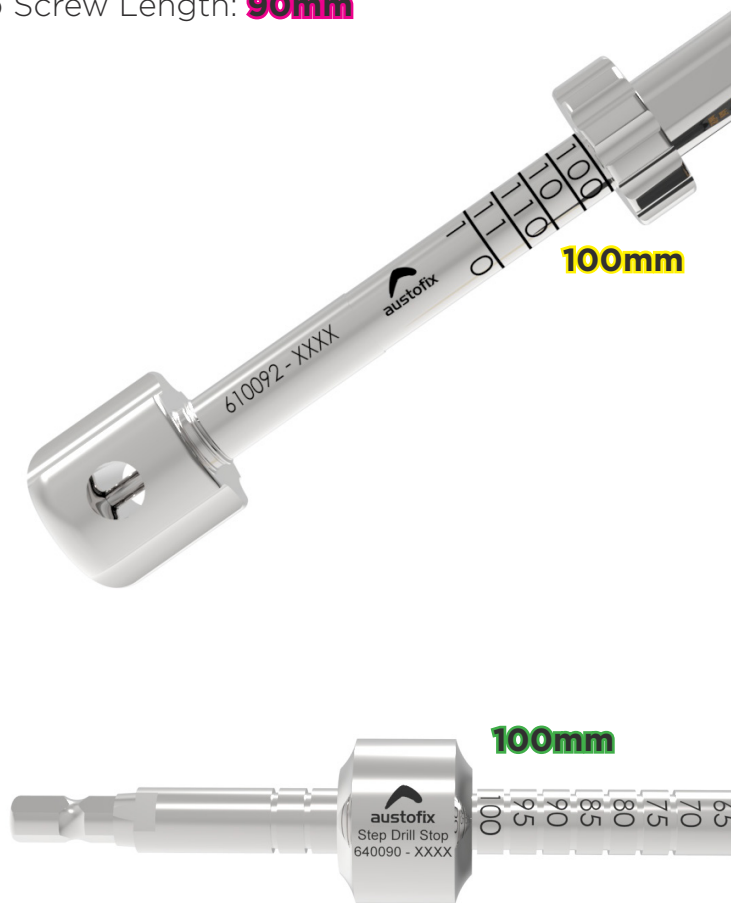
**Note:** Markings will automatically calculate 10mm tolerance between the Hip Screw and medial tip of the femoral head.

Gap Between Sleeve & Bone: **10mm**

Reading: **100mm**

Reaming Depth: **100mm**

Hip Screw Length: **90mm**



# Lag Screw Measurement - Guidewire off Head

Pull the Guidewire Sleeve back to the end of the Guidewire and take the measurement.

**Note:** Markings will automatically calculate 10mm tolerance between the Hip Screw and medial tip of the femoral head.

Gap Between GW & Femoral Head: **10mm**

Reading: **90mm**

Reaming Depth: **100mm**

Hip Screw Length: **100mm**

