

F1+

Proximal Femoral Nail

PRODUCT BROCHURE

Austofix F1+

The Austofix F1+ Nail is based on over 30 years of clinical history and Austofix expertise in the design and manufacture of world-class and innovative trauma devices. Our design objective is to reduce operative times and support efficient and safe procedures resulting in improved patient outcomes.

The Austofix F1+ Nail is the preferred treatment option for hip & midshaft fractures.

F1+ Short

- Universal - Left or Right fractures
- 170mm or 190mm options
- Lateral bend
- 9, 10, 11m distal diameters

170mm Nail (High Distal Screw)

- Requires single incision for all screws

190mm Nail (Low Distal Screw)

- Suitable for subtrochanteric fractures

F1+ Long

- Left & Right configurations
- 340-460mm options
- Lateral & AP bend
- Variable radius of curvature
- 10, 11, 12m distal diameters
- Ezy-Aim Compatible
- Static & dynamic locking holes proximally & distally



Implant Features

F1+ Nails

- 120°, 125°, 130° Lag Screw options
- 15.5mm Proximal Diameter
- Type II Anodised Titanium
- Stress relief cuts to reduce nail fatigue
- Shorter proximal position with lateral chamfer to reduce tendon irritation
- Intuitive instrument set to decrease procedure time



10.4mm Hip Screw

- Provides stable load transfer between the femoral head and nail for secure fracture healing
- Includes lateral shoulder preventing medial migration through the nail



10.4mm Hip Screw

10.4mm Helical Blade

- Provides improved resistance to varus collapse
- Enhances rotational control
- Reduces bone removal
- Includes lateral shoulder preventing medial migration through the nail



10.4mm Helical Blade

4.0/4.8mm Locking Screw

- Fully threaded for ease of insertion
- The last 1/4 of threads expands to grip the lateral cortex and resist backout
- Low profile head to avoid soft tissue irritation



4.0/4.8mm Locking Screw

M10 End Cap

- Features proximal shoulder to prevent irritation



M10 End Cap

In-Built Set Screw

- Pre-assembled to reduce operating time
- Increases patient safety
- Both static and sliding locking option
- Self-centering chamfer assists in connecting the articulating driver

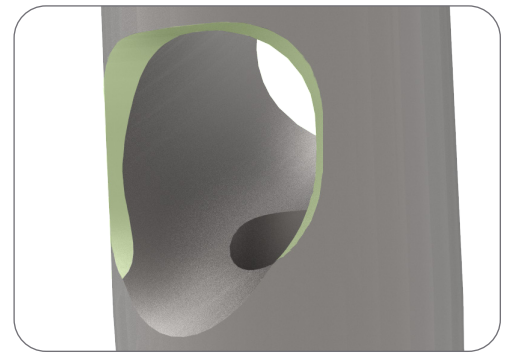


In-Built Set Screw

Lag Screw Relief Cuts

Chamfered edges at screw entrance helps to:

- Reduces stress on the Lag Screw
- Reduces risk of failure at the large hole by distributing stresses throughout the whole Nail
- Unique proximal dual chamfer



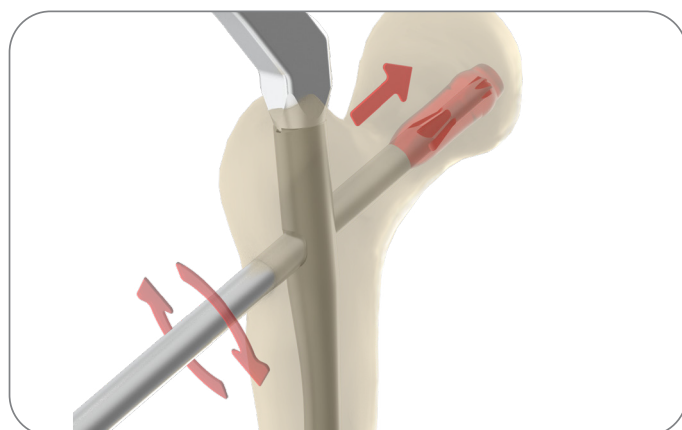
Nail Holder

All-In-One Nail Holder and Guide enables fast and easy insertion of the Nail and the insertion of the proximal and distal screws.

- Significant reduction of operating procedure time
- Reduction of inventory
- Radiolucent Guide enhances X-ray visualisation and when used with Single-Shot assists in K-wire placement

Single-Shot™ Alignment

- Improves accuracy and reduces multiple drilling into the femoral head
- Limits radiation exposure
- Reduces operating procedure time

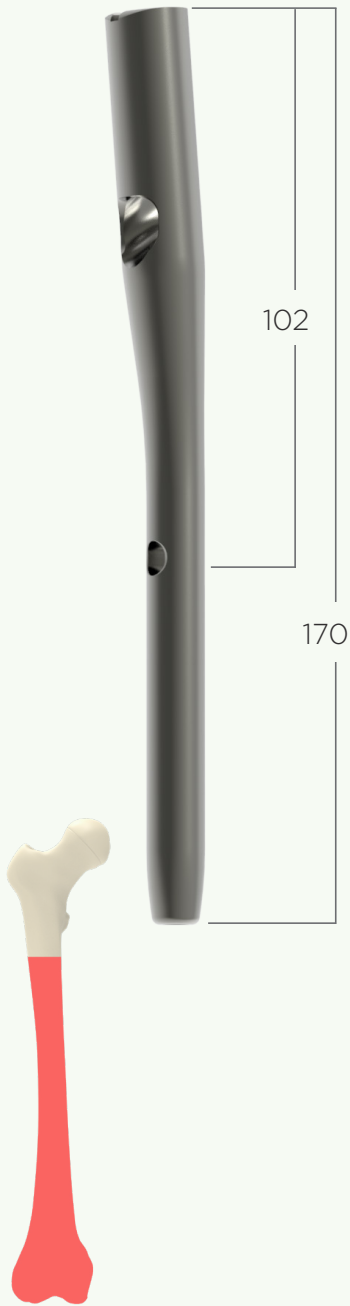


Bone Conservation Reamer

- Reduces bone tissue removal
- Improves stability of the Hip Screw in osteoporotic bone
- Sharp lateral cutting tip

F1+ Nails

F1 Short - 170mm



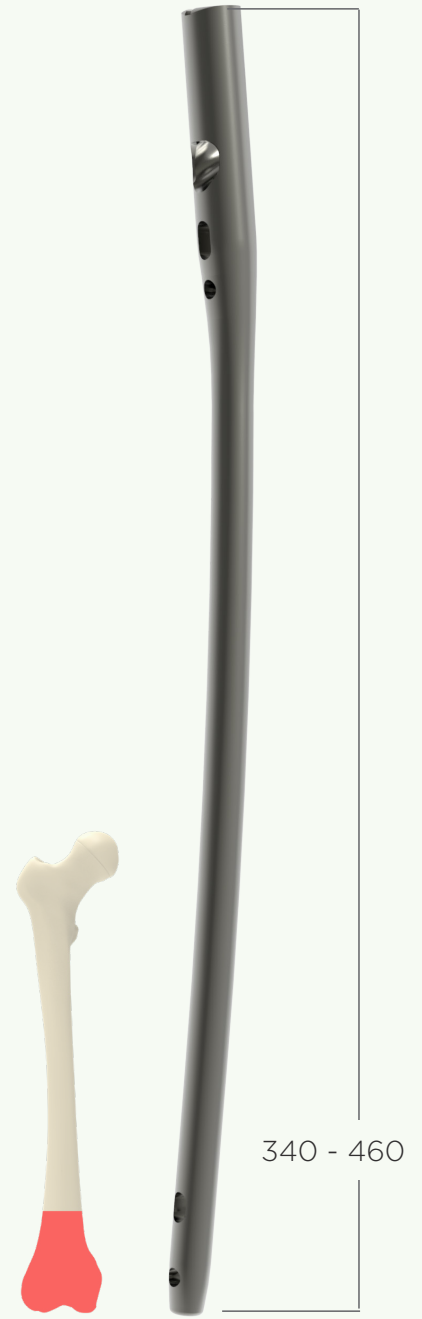
Higher Distal Screw increases Strength and Stability for Intertrochanteric Fractures. Decreases Risk of Femoral Shaft Fractures.

F1 Short - 190mm



Lower Distal Screw for Trochanteric Fracture Fixation with Subtrochanteric Extension. Optimal in Contrast to Competitors.

F1 Long - 340 - 460mm



Dual Static and Transverse Hole with Anatomical AP Bend to Optimise Midshaft Femoral Fractures. Variable Radius of Curvature.

Implants

F1+ Short Nail (170mm & 190mm)

Nominal Length	Ø9	Ø10	Ø11
120° Part Numbers			
170	379200	370200	371200
190	379202	370202	371202
125° Part Numbers			
170	379250	370250	371250
190	379252	370252	371252
130° Part Numbers			
170	379300	370300	371300
190	379302	370302	371302



Set Screw (Pre-Assembled)

Product Code	Screw Angles
370100A 370120B	120°
370100A 370125B	125°
370100A 370130B	130°



F1+ Long Nail (340-460mm)

Nominal Length	Ø10		Ø11		Ø12	
	Left	Right	Left	Right	Left	Right
120° Part Numbers						
340	37121034L	37121034R	37121134L	37121134R	37121234L	37121234R
360	37121036L	37121036R	37121136L	37121136R	37121236L	37121236R
380	37121038L	37121038R	37121138L	37121138R	37121238L	37121238R
400	37121040L	37121040R	37121140L	37121140R	37121240L	37121240R
420	37121042L	37121042R	37121142L	37121142R	37121242L	37121242R
440	37121044L	37121044R	37121144L	37121144R	37121244L	37121244R
460	37121046L	37121046R	37121146L	37121146R	37121246L	37121246R
125° Part Numbers						
340	37111034L	37111034R	37111134L	37111134R	37111234L	37111234R
360	37111036L	37111036R	37111136L	37111136R	37111236L	37111236R
380	37111038L	37111038R	37111138L	37111138R	37111238L	37111238R
400	37111040L	37111040R	37111140L	37111140R	37111240L	37111240R
420	37111042L	37111042R	37111142L	37111142R	37111242L	37111242R
440	37111044L	37111044R	37111144L	37111144R	37111244L	37111244R
460	37111046L	37111046R	37111146L	37111146R	37111246L	37111246R
130° Part Numbers						
340	37131034L	37131034R	37131134L	37131134R	37131234L	37131234R
360	37131036L	37131036R	37131136L	37131136R	37131236L	37131236R
380	37131038L	37131038R	37131138L	37131138R	37131238L	37131238R
400	37131040L	37131040R	37131140L	37131140R	37131240L	37131240R
420	37131042L	37131042R	37131142L	37131142R	37131242L	37131242R
440	37131044L	37131044R	37131144L	37131144R	37131244L	37131244R
460	37131046L	37131046R	37131146L	37131146R	37131246L	37131246R



4.8mm Locking Screw	
Product Code	Screw Length (mm)
364820	20
364825	25
364830	30
364832	32.5
364835	35
364837	37.5
364840	40
364842	42.5
364845	45
364847	47.5
364850	50
364855	55
364860	60
364865	65
364870	70
364875	75
364880	80
364885	85
364890	90



10.4mm Hip Screw	
Product Code	Screw Length (mm)
361460	60
361465	65
361470	70
361475	75
361480	80
361485	85
361490	90
361495	95
361400	100
361405	105
361410	110
361415	115



10.4mm Helical Blade	
Product Code	Screw Length (mm)
360460	60
360465	65
360470	70
360475	75
360480	80
360485	85
360490	90
360495	95
360400	100
360405	105
360410	110
360415	115



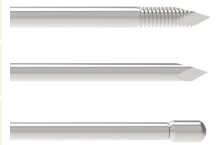
End Cap	
Product Code	Head Length (mm)
363401	1
363405	5
363410	10
363415	15



4.0mm Locking Screw	
Product Code	Screw Length (mm)
364020	20
364025	25
364030	30
364032	32.5
364035	35
364037	37.5
364040	40
364042	42.5
364045	45
364047	47.5
364050	50
364055	55
364060	60
364065	65
364070	70



Guidewires	
Product Code	Description
533235	3.2x400mm Guidewire (Twin Packed)
512525	2.5x250mm K Wire (Twin Packed)
533900	3.0x900mm Ball-tip Guidewire



Drills	
Product Code	Description
514534	4.5x340mm Drill
514514	4.5x155mm Drill
513730	3.7x300mm Drill





Austofix

Legal Manufacturer

Australian Orthopaedic Fixations Pty Ltd
18 Kinkaid Avenue, North Plympton SA 5037, AUSTRALIA

Telephone: 1300 727 075
Fax: 1300 727 380
Email: sales@austofix.com.au

DISTRIBUTOR STICKER



Advena Ltd, Tower Business
Centre, 2nd Flr, Tower Street,
Swatara, BKR 4013 Malta

F1+ Brochure Rev 9

Australian Made • Australian Owned • Australian Designed

austofix.com.au