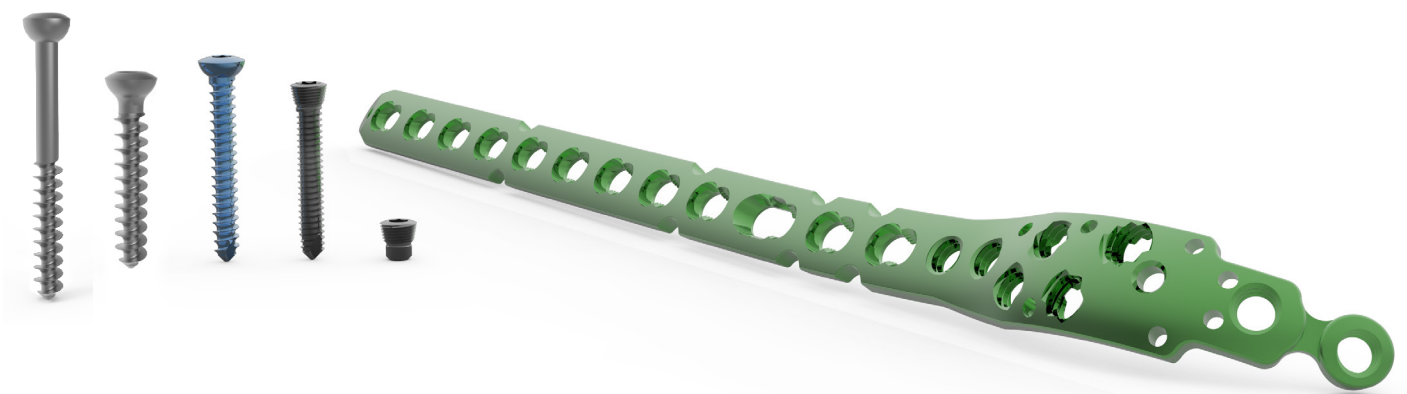


austofix **Olecranon**

3.5mm L&C Plate

Product Brochure



austofix Olecranon 3.5mm L&C Plates

The Austofix Olecranon Locking Plates are designed for the fixation of the many fracture patterns found in the Olecranon.

The titanium plates and screws incorporate significant design advantages, facilitating surgical accuracy and efficiency and delivering better patient outcomes.

Austofix understands the importance of proven, high quality medical devices and instruments. The Olecranon L&C Plates adhere to these principles and will provide the surgeon with a comprehensive olecranon fixation solution.

Plate



Screws



Implant Features

Plates

Combi Hole

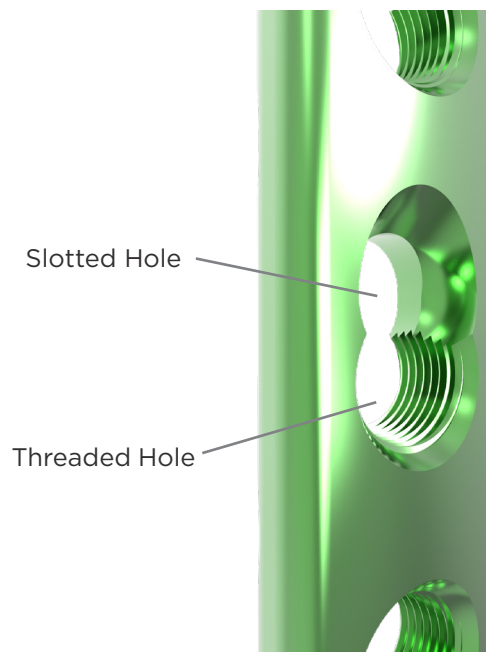
The Combi Hole allows for a range of plate fixation options. The holes accommodate both Compression and Locking screws.

Slotted Hole - Cortex Screws/Cancellous Screws

Cortex or Cancellous Screws used in the slotted hole for plate-to-bone compression increases stability.

Threaded Hole - Locking Screws

Locking screws link with the threads in the Threaded Hole, keeping the screw at a fixed angle.



Tapered End

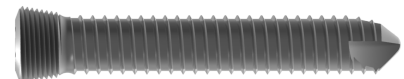
Tapered end assists in submuscular plate insertion and helps to minimise tissue trauma.



Screws

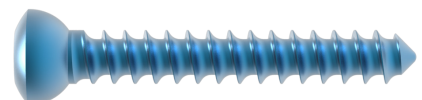
Locking Screw

- Self-Tapping
- Reduced Screw Back-out
- Unicortical or Bicortical Fixation



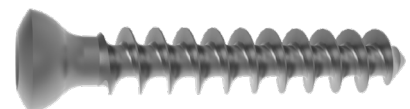
Cortex(Cortical) Screw

- Dynamic Compression
- Compression



Cancellous Screw

- Dynamic Compression
- Interfragmentary compression (Partially Threaded)
- Compression



Spacer

- Reduce Plate-To-Bone Contact
- Minimises Disruption of Periosteal Blood Supply

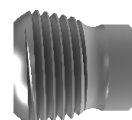


Plate Features

Anatomical Fit

- » Pre-contoured for improved anatomical fit on the proximal radius
- » Tapered end assists in submuscular plate insertion and helps to minimise tissue trauma
- » Plate can be contoured with Plate Benders (112100002/3) for a more suitable fit
- » Reconstruction Notches along the shaft of the plate allow for easy reshaping

Proximal Locking

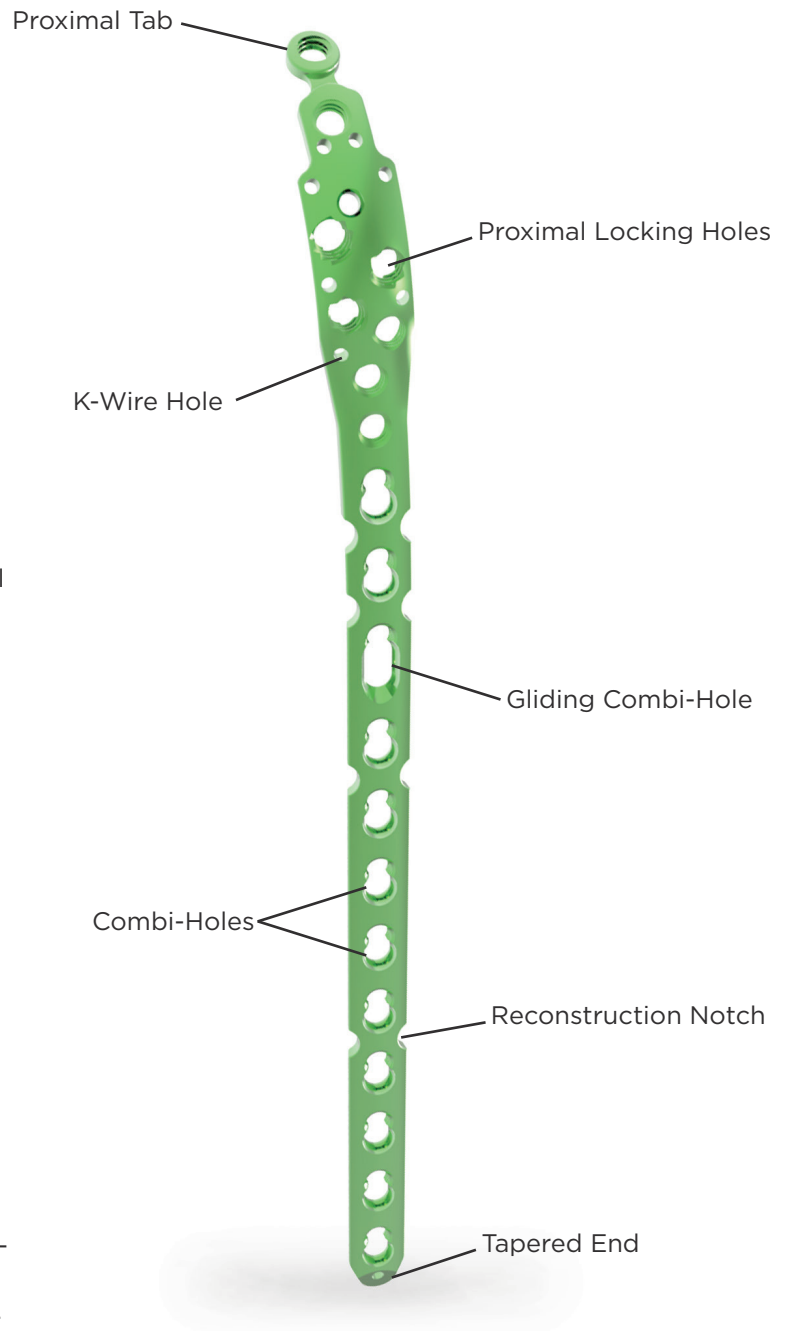
- » Proximal locking holes provide flexibility in Locking Screw fixation
- » Multiple points of fixation for superior angular stability
- » Fixed-angle locking construct providing clinical benefits to patients with osteopenic bone
- » Provides stable fracture fixation while preserving vascular supply to accelerate bone healing
- » Additional fixation of proximal fragments through the use of the removable Proximal Tab

Plate Fixation & Dynamic Compression

- » Combi-Holes along distal shaft of the Plate allow Locking Screws and compression using Cortex and Cancellous screws
- » Gliding Combi-Hole allows adjustment of plate position after preliminary screw insertion
- » Limited-contact distal shaft design
- » Distal Plate shaft has increased thickness for additional strength

Clinical Indications

- » Designed to address simple and complex extra- and intra-articular fractures of the olecranon
- » Can be utilised for repair of the olecranon after osteotomy



Screw Range

Locking Screw

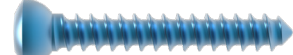


Cancellous Screw



Fully Threaded

Cortex Screw



Spacer



Partially Threaded