



austofix

austofix **Calcaneal** 3.5mm Locking Plates

Product Brochure

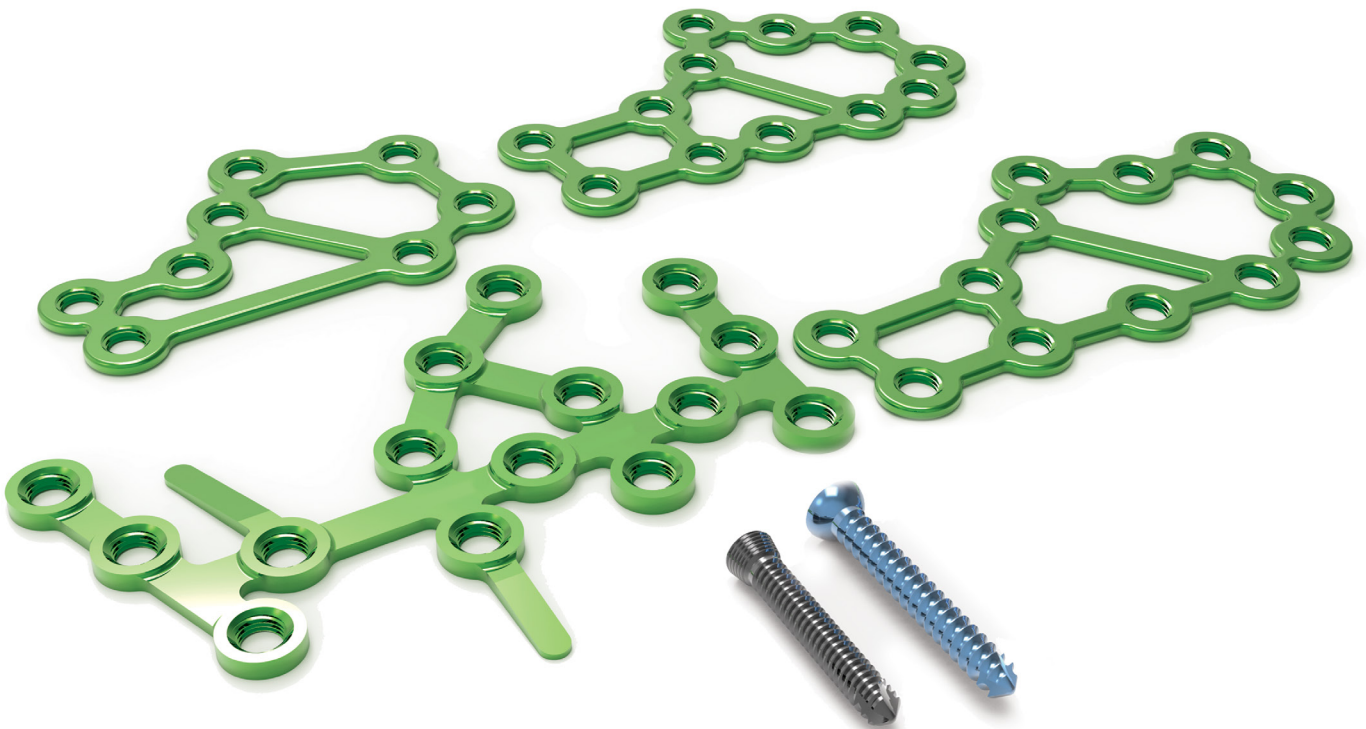


Plate Features

Anatomical Fit

- » Left and right versatile designs
- » Bendable tabs provide additional support for the anterior process and plantar fragments
- » 53mm, 60mm & 68mm Calcaneal Locking Plate II lengths address variations of patient anatomy
- » Bendable and removable locking holes allows adaptation to unique clinical indications

Calcaneal Locking

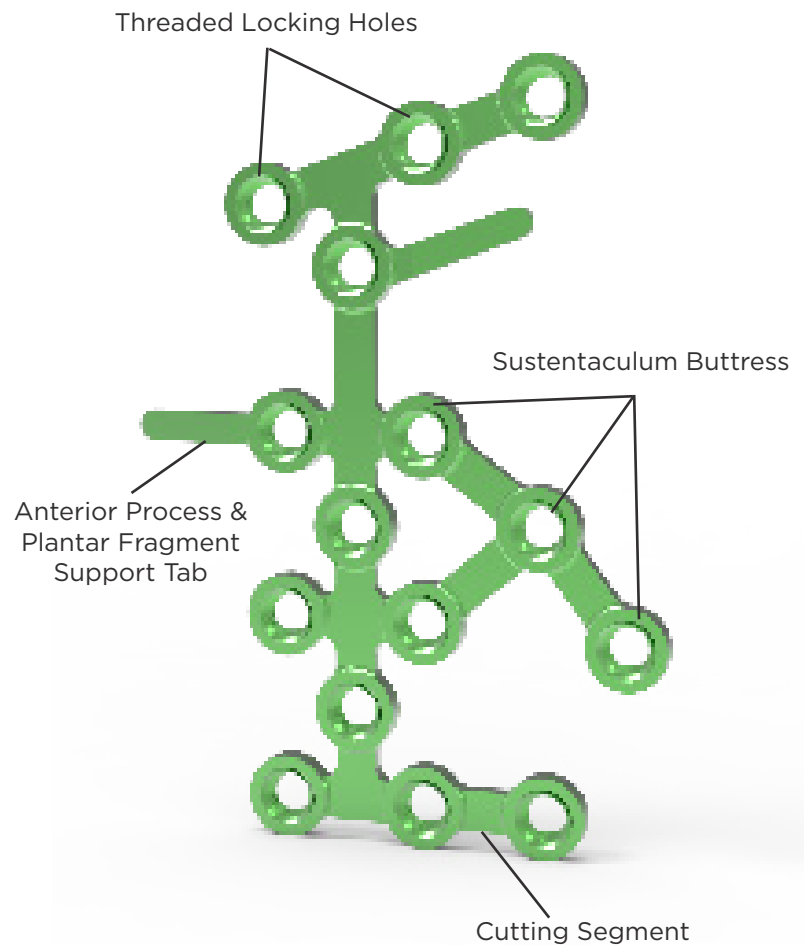
- » Multiple locking holes provide flexibility in Locking Screw fixation
- » Calcaneal Locking Plate I houses 15 locking holes
- » 8 & 12 hole Calcaneal Locking Plate II options
- » Fixed-angle locking construct providing clinical benefits to patients with osteopenic bone
- » Bicortical and/or unicortical Locking Screw fixation
- » Threaded locking holes allow 3.5mm Cortex Screws for interfragmentary compression

Plate Fixation

- » Optional buttress for the sustentaculum, providing superior support to the calcaneotalar articular surface
- » Provides stable fracture fixation while preserving vascular supply to accelerate bone healing

Clinical Indications

- » Designed to address simple and complex extra- and intra-articular fractures of the calcaneus
- » Can be utilised for osteotomies and joint depression



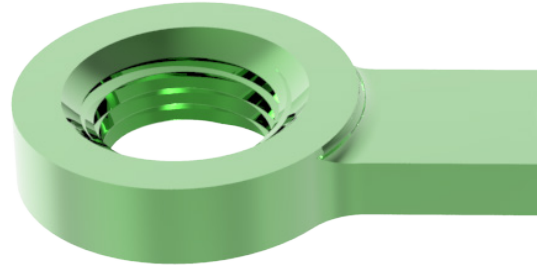
Implant Features

Plates

Threaded Hole

The Threaded Hole allows for a range of plate fixation options. The holes accommodate Cortex and Locking Screws.

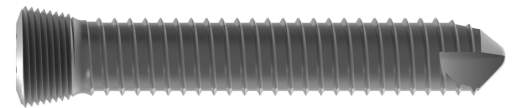
- » Locking Screws link with the threads in the Threaded Hole, keeping the Screw at a fixed angle.
- » Multiple points of fixation to allowing the plate to buttress fragments.
- » Provides 5° of angulation for 3.5mm Cortex Screws



Screws

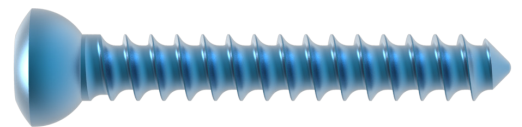
Locking Screw

- Self-Tapping
- Reduced Screw Backout
- Unicortical or Bicortical Fixation



Cortex (Cortical) Screw

- Compression



austofix **Calcaneal** 3.5mm Locking Plates

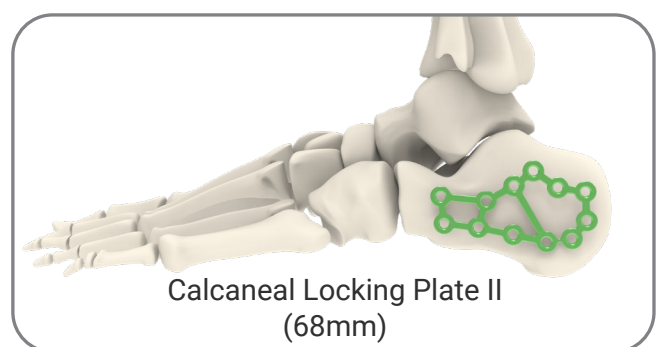
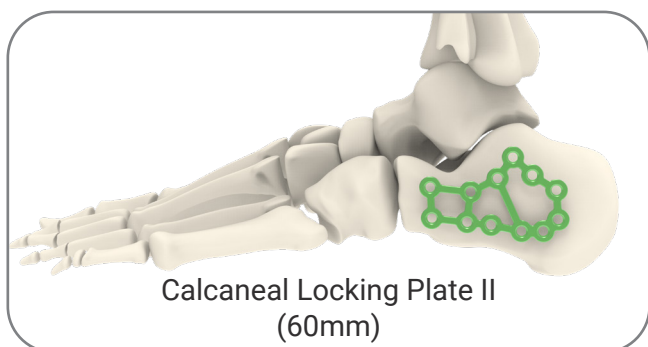
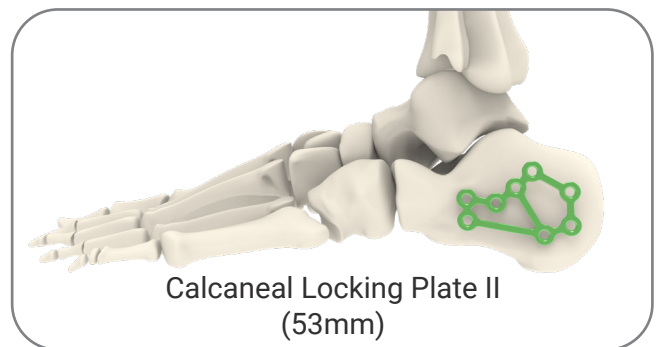
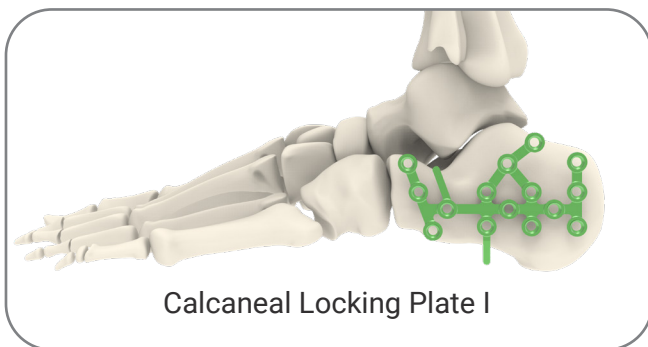
The Austofix Calcaneal Locking Plates provide surgeons with a complete fixation system for the many complex fracture patterns found in the calcaneus.

The titanium plates and screws incorporate significant design advantages, facilitating surgical accuracy and efficiency and delivering better patient outcomes.

Austofix understands the importance of proven, high quality medical devices and instruments. The Calcaneal Plates adhere to these principles and will provide the surgeon with a comprehensive calcaneal fixation solution.

Plate Range

This surgical technique applies to the following locking compression plates. Plate selection is determined by surgeon.



Screw Range

Locking Screw



Cortex Screw

